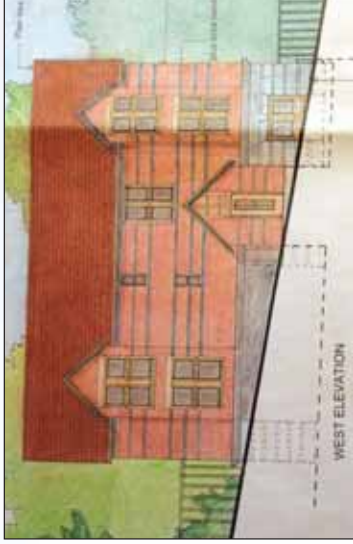


# the BIG project

## a new start for the homeless in Reading



**"we are indebted to our professional consultants who have all agreed to work for concessionary fees and in some cases for FREE!"**

**visit: [www.BigProject.info](http://www.BigProject.info) for more information**

### We are about to start on the most ambitious project that the Rotary Club of Reading has ever been involved in.

- This project involves the acquisition of a freehold site in central Reading. We propose constructing seven purpose built bed-sit units for Reading homeless people.
- A scheme has been prepared, planning permission has been granted and there is good support from Reading Borough Council.
- The units will offer a second chance for local homeless people to start rebuilding their lives & with support from Reading Single Homeless Project (RSHP) we hope they will be able to move on to independent living within 18 months.
- The properties will plug a gap in the system and with a regular turnover will help many people over the coming years.

### We need your help

- The scheme costs are budgeted at £400,000 and to date we have secured promises which together with our fundraising amount to about £50,000. We are therefore faced with a massive shortfall. Whilst the scheme will support a significant borrowing, in order to keep rents affordable we need to raise a further £100,000.
- Opportunities exist for personal and corporate sponsorship and we are hoping to gain both TV & Press coverage. We are also interested in hearing from anyone who may be prepared to offer interest free loans.
- All administration costs are met by the Rotary Club of Reading including the production of this flyer. Accordingly 100% of all funds donated will go to the charitable causes as we work to maximise value and minimise costs.

### What we need

I would like to help the Rotary Club of Reading and Reading Rotary Community Projects Ltd with their community projects with the following:

- 1) Cash donation or grant in the sum of £
- 2) interest free loan of £  for  yrs
- 3) Materials at cost (please provide details on a separate sheet)
- 4) A donation of materials or fittings (please provide details on a separate sheet)

Cheques should be made payable to **Rotary Club of Reading** & returned with this form to the address below.

Any sponsor who wishes to donate a sum in excess of £10,000 will be given the right to name one of the units and a plaque will be placed on the property as a permanent reminder of any such generous donation. More information about this project can be found on our Web site: [www.BigProject.info](http://www.BigProject.info)

Your name:

Your address:

Post code:

Your phone number:

Please complete this form and declaration, tear off this page and return to:  
**The Rotary Club of Reading, c/o Swallows Loft, Buckhold, Pangbourne, READING, RG8 8QB**

## Gift Aid

If you are a UK Taxpayer you can help us by completing this declaration. This will increase the value of your donation by 28%. This is because we can reclaim tax.

I want the Rotary Club of Reading Benevolent Fund (RCRBF) to treat

The enclosed Donation of £

The Donation of £  Dated / /

All donations I make from the date of this declaration

All donations made since 6th April 2000 and all future donations unless advised otherwise as gift aid donations.

Signature

Date / /

Notes .....

1. If your declaration covers donations you may make in the future please notify the RCRBF if you change your address
2. You can cancel the declaration at any time by notifying RCRBF. It will then not apply to any subsequent donations
3. You must pay an amount of Income Tax and or Capital Gains Tax at least equal to the tax that we reclaim on your donation within the tax year (currently 28p per £1)
4. If in the future your circumstances change and you no longer pay tax equal to the amount we reclaim you should cancel your declaration (see note 1)
5. If you pay tax at the higher rate you can claim further tax relief in your self assessment tax return
6. If you are unsure whether your donation qualifies for Gift Aid relief you can ask your local tax office for a leaflet IR113 Gift Aid

Charity registration number 1031813

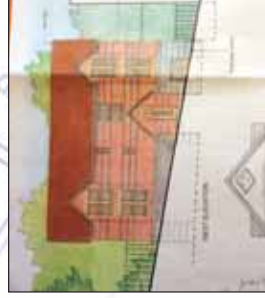


# the BIG project

# the BIG project

a new start for the homeless in Reading

a new start for the homeless in Reading



**"This project is the biggest and most ambitious project that the Rotary Club of Reading has ever been involved in. It seems wholly fitting that in our Centenary Year we are beginning this project that will leave a lasting point of hope for the homeless for decades to come."**

**Peter Webb**  
President  
Rotary Club of Reading

**The Rotary Club of Reading**  
[www.readingrotary.org.uk](http://www.readingrotary.org.uk)

**The Rotary Club of Reading**

in conjunction with  
Reading Rotary Community Projects Ltd  
[www.BigProject.info](http://www.BigProject.info)  
Reading Single Homeless Project (RSHP)  
[www.rsHP.co.uk](http://www.rsHP.co.uk)

